

Introducing **TRAFFORD**

Elevate your space with the timeless Trafford™ collection. The classic shape and clean appearance complement any home aesthetic, and the unique designer rosette will add a warm and welcoming touch to your doors. Adorn your interior and exteriors with Trafford™ levers, and enjoy our highest level of security, easiest installation and peace of mind.

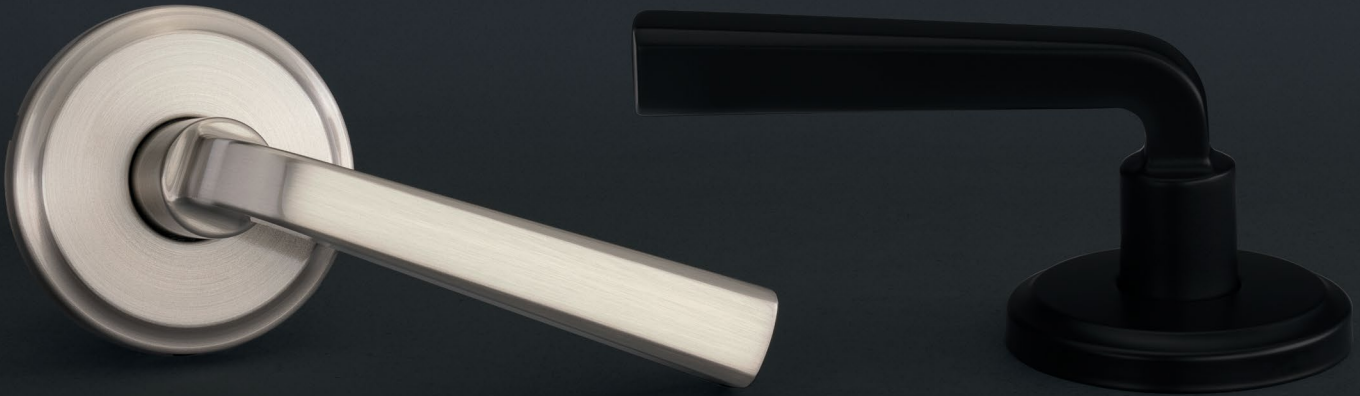
- Features New Advanced SmartKey Security Technology
- ANSI/BHMA Grade 2 Residential Security/Durability/Finish
- Traditional bent lever for a timeless, warm & elegant look



Trafford Lever with SmartKey Security
in Satin Nickel



WEISER



FINISHES



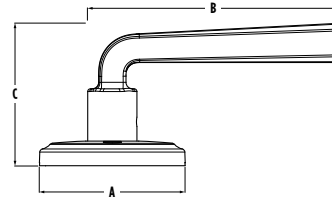
514 | Matte Black



15 | Satin Nickel

FINISH AND
LIFETIME
WARRANTY
MECHANICAL

DIMENSIONS



Design	A	B	C	C (Keyed)
Trafford	2 ²¹ / ₃₂ "	4 ⁵ / ₃₂ "	2 ¹⁹ / ₃₂ "	2 ⁹ / ₁₆ "



**SMARTKEY
SECURITY™**

Weiser's SmartKey Security™ provides homeowners with the superior security that is resistant to a variety of advanced break-in methods.

This technology also allows homeowners to re-key their locks themselves in seconds, rendering lost or un-returned keys useless.

SPECIFICATIONS

Door Prep	Cross Bore 2- ¹ / ₈ ". Edge Bore 1"	Strikes	Includes 2 ¹ / ₄ " full lip square and round corner, other options available
Backset	Adjustable 2 ³ / ₈ " or 2 ³ / ₄ "	Bolt	¹ / ₂ " Throw
Door Thickness	1 ³ / ₈ " - 1 ³ / ₄ " Doors standard Thick Door Kit Available for 101 and 535 functions	Door Handing	Reversible for right or left hand doors.
Cylinder	SmartKey Security™	ANSI/BHMA	A156.30 Grade 2
Faceplates	1" x 2 ¹ / ₄ " includes round corner, square corner and drive-in	ADA	Satisfies section 4.13.9 ADA requirement for 101 and 331 functions

CANADA'S #1 SELLING LOCK BRAND

Weiser is a trademark of ASSA ABLOY Group © 2024 ASSA ABLOY Group

weiserlock.com

1-800-501-9471